

Type 14550

4-way directional control valve

Comprising four cam-operated modules, each containing a partially balanced plunger which is unseated when the handle is operated. In the closed position, the plunger makes a leak-free seal with the seat. Being dynamically biased towards closing, the seal becomes tighter as pressure rises.

A module can be readily withdrawn from the base of the valve body for servicing or renewing the seat or seals. Total handle movement of 90° gives positive detented selections at 45° intervals.

The valve is suitable for use with a wide range of fluids and is designed for working pressures of up to 10,000 psi. Torque required to operate the handle remains light throughout the pressure range.



Materials 316 stainless steel



This control valve conforms to Directive 94/9/EC relating to equipment intended for use in potentially explosive atmospheres and is ATEX (ATmosphere EXplosible) certified.



Marshalsea Hydraulics has been assessed by SGS Société Générale de Surveillance SA and certified as meeting the requirements of ISO 9001:2000 for the design, development, manufacture and servicing of hydraulic pumps, relief valves and intensifiers.

ID	Symbol	Cam no.	Handle position 1	Handle centre	Handle position 2
A		01	Spindle A closed	Spindle A closed	Spindle A open
			Spindle B open	Spindle B closed	Spindle B closed
			Spindle C open	Spindle C closed	Spindle C closed
			Spindle D closed	Spindle D closed	Spindle D open
			Port 3 to pressure		Port 3 to tank
			Port 2 to tank	All ports blocked	Port 2 to pressure
B		02	Spindle A open	Spindle A closed	Spindle A closed
			Spindle B closed	Spindle B closed	Spindle B open
			Spindle C closed	Spindle C open	Spindle C open
			Spindle D open	Spindle D open	Spindle D closed
			Port 3 to tank	Port 1 blocked	Port 3 to pressure
			Port 2 to pressure	Ports 2 & 3 to tank	Port 2 to tank
C		03	Spindle A open	Spindle A closed	Spindle A closed
			Spindle B closed	Spindle B closed	Spindle B open
			Spindle C closed	Spindle C closed	Spindle C open
			Spindle D open	Spindle D open	Spindle D closed
			Port 3 to tank	Ports 1 & 2 blocked	Port 3 to pressure
			Port 2 to pressure	Port 3 to tank	Port 2 to tank
D		02	Spindle A open		Spindle A closed
			Spindle B closed		Spindle B open
			Spindle C closed	Not used	Spindle C open
			Spindle D open		Spindle D closed
			Port 3 to tank		Port 3 to pressure
			Port 2 to pressure		Port 2 to tank
E		04	Spindle A closed	Spindle A open	Spindle A open
			Spindle B open	Spindle B closed	Spindle B closed
			Spindle C open	Spindle C open	Spindle C closed
			Spindle D closed	Spindle D closed	Spindle D open
			Port 3 to pressure	Ports 1 & 2 to tank	Port 3 to tank
			Port 2 to tank	Port 3 blocked	Port 2 to pressure



Marshalsea Hydraulics Limited
Marshalsea House
Venture Way
Priorswood Industrial Estate
Taunton
Somerset TA2 8DE
United Kingdom

Tel: 01823 331081
(+44 1823 331081)
Fax: 01823 323382
(+44 1823 323382)

E-mail info@marshalsea.co.uk

www.marshalsea.co.uk

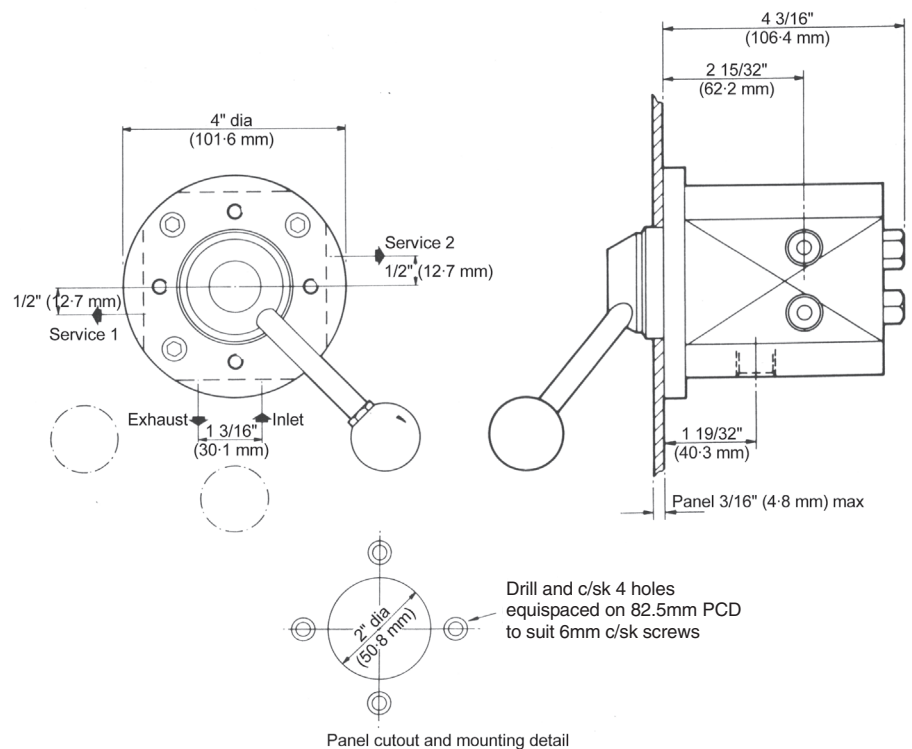
Type 14550 (continued)

Product specification

Product numbers for various options of spigot or handle for each of the IDs defined on the previous page can be found from the following table.

ID	Product number			
	Spigot 3/8 NPT	Handle 3/8 NPT	Spigot 3/8 BSP	Handle 3/8 BSP
A	14550-01	14550-08	14550-15	14550-19
B	14550-02	14550-09	14550-16	14550-20
C	14550-03	14550-13	14550-17	14550-21
D	14550-05	14550-10	14550-24	14550-23
E	14550-06	14550-11	14550-25	14550-27

Drawing giving dimensions



Spares

Repair kit for all models has order code: RS 565



Marshalsea Hydraulics Limited
Marshalsea House
Venture Way
Priorswood Industrial Estate
Taunton
Somerset TA2 8DE
United Kingdom

Tel: 01823 331081
(+44 1823 331081)
Fax: 01823 323382
(+44 1823 323382)

E-mail info@marshalsea.co.uk

www.marshalsea.co.uk